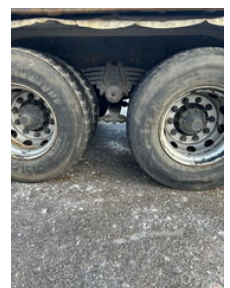


Scania P 6x4 platform manuel gearbox steel suspension

General features

Brand	Scania
Model	P
Subcategory	Drop side
Date of first registration	04-08-2008
Condition	Used
General condition	Very good
Fuel	Diesel
Emission class	Euro 3



Characteristics

Cabin

No

Scania P 6x4 platform manuel gearbox steel suspension

Technical specifications

Number of axes	3
Axis configuration	6x4
Transmission	Manual
Engine output	270kw

Accessories

- PTO
- Sleeper cab
- Heavy duty engine brake
- Visor